



collectors' items



in new glory

Werderklinik


a historical monument in new
glory

»We are delighted that, not only have we found new headquarters for the VR-Bank, but also that we have contributed towards the conservation of a historical monument in Schwerin,«
says Willi Plum, Chief Executive Officer of the VR-Bank eG in Schwerin



In its search for its new headquarters, the VR Bank eG in Schwerin has turned towards a piece of Schwerin history – the former Werderklinik. The hospital started operations in a neo-classical plaster building designed by the court architect Adolph Demmler back in 1840. The former clinic and a couple of other buildings belonging to the entire complex were listed buildings. The renovation plans, however, went one step further. Even the five-storey annexe of the hospital – built in Bauhaus style and completed in 1931 by the then Director for Town Planning Andreas Hamann – was renovated in keeping with regulations pertaining to the preservation of listed buildings. It was only thanks to the efforts of builders and architects that the building became a listed building in its own right. An extension from the GDR era was demolished using heavy machinery, in order to recreate the original state. A surprising amount of concrete and steel had to be demolished for this purpose. During the renovation work, the construction workers found any amount of asphaltic felt in the ceilings of the Hamann building, which had to be professionally disposed of. The recreation of the building's original colour was also anything but easy, since it had been completely replastered at some point. Architects and builders had to overcome this and a barrage of further obstacles before the entire complex took on its new-found glory in early 2015.





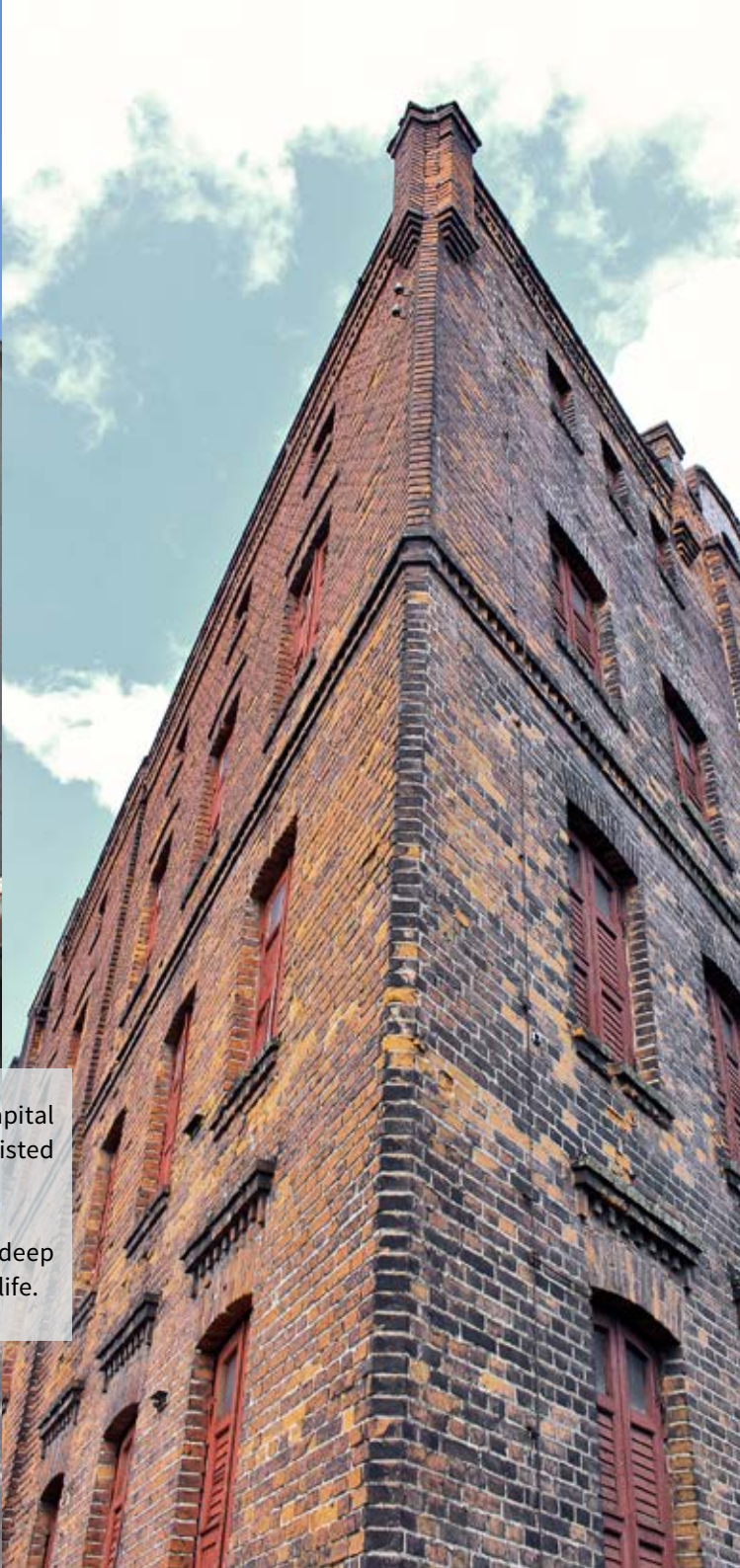
These days, 60 employees of the VR Bank live up the former clinic complex. Apartments with a view across the rooftops of Schwerin's Schelfstadt were built on the top storey of the Hamann building. The equally listed park has been recreated and made accessible to the general public during the bank's business hours.

A further positive side effect: the renovation work on the Werderklinik resulted in others, especially residential building projects in the direct neighbourhood. The attractiveness of the entire quarter has tangibly increased.



This is a success story which the federal capital of Schwerin would also like to see for other listed buildings in the city.

True collectors' items are still stuck in a deep slumber, and are waiting to be kissed back to life.



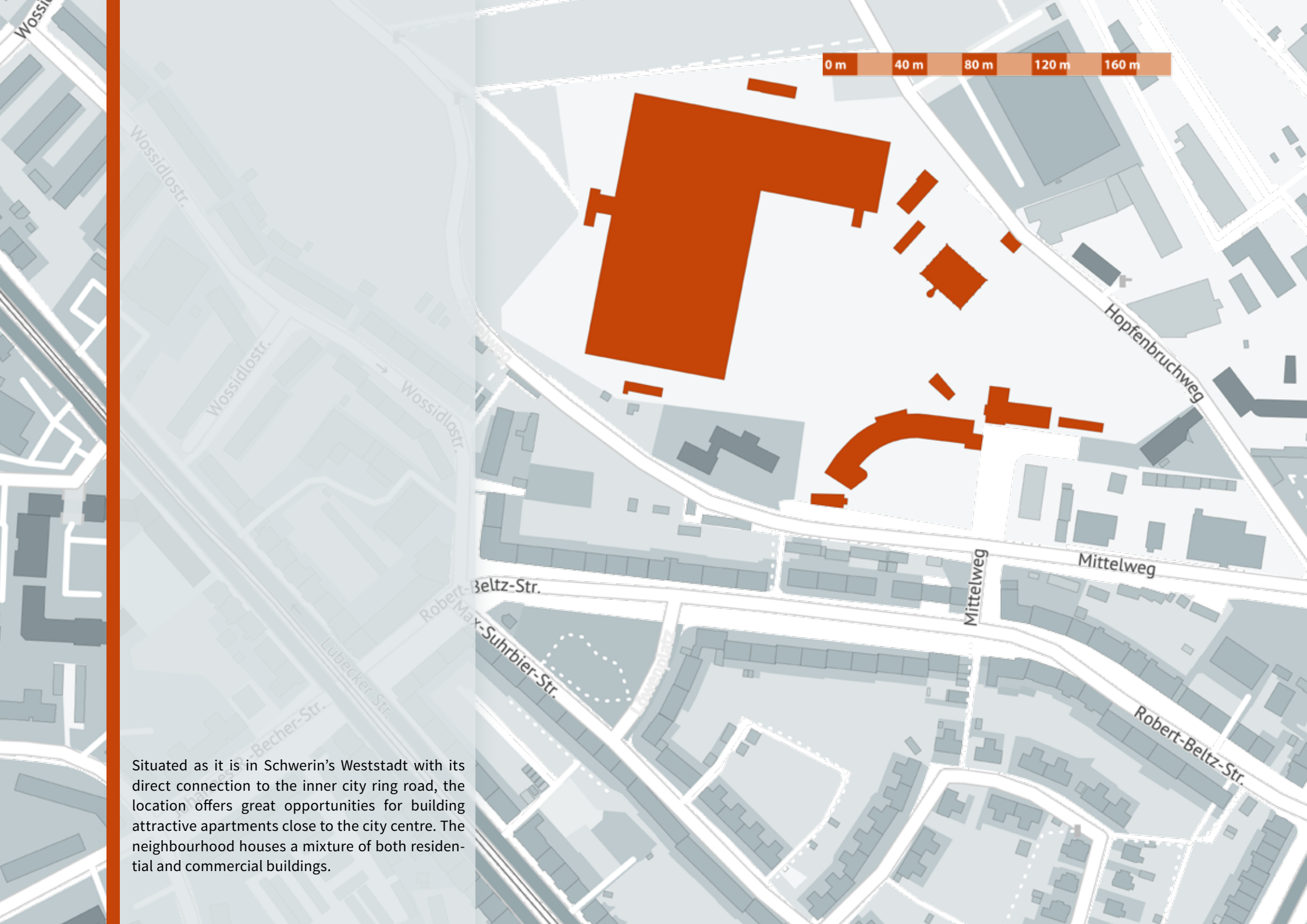


KIW premises

Former KIW Vorwärts premises

Fans of old cars are in for a great time at the annual vintage car meeting held on the premises of the former »KIW Vorwärts« in Schwerin's Weststadt. The location is predestined for this event, since vehicles have been at home here ever since 1963. Lorries as well as cars such as the Trabant and Wartburg were repaired in the former Kraftfahrzeug-Instandhaltungs-Werk (car repair works). The former »Vorwärts« car repair works employed anywhere up to 800 people at a time. The old workshops with their striking architecture are still located on the premises. The workshop was closed down in the early 1990s. Apart from for a few events, the industrial wasteland is no longer used these days.





Situated as it is in Schwerin's Weststadt with its direct connection to the inner city ring road, the location offers great opportunities for building attractive apartments close to the city centre. The neighbourhood houses a mixture of both residential and commercial buildings.

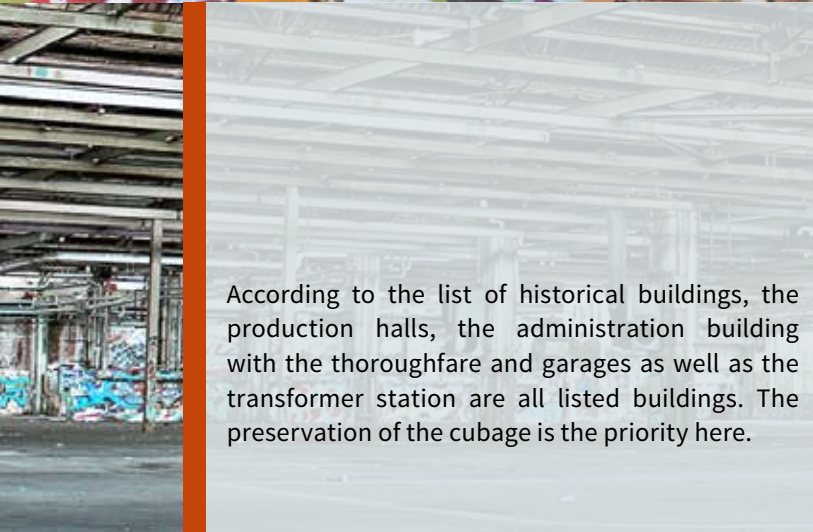


Currently, the property comprises two production halls as frame constructions with an annexe as an office (from ca. 1960), a five-storey administration building with a porch as frame construction (from ca. 1960), one transformer station (from ca. 1962), and several auxiliary buildings.

The property has a total surface area of approx. 46,440 square metres and is located in the communal district of Schwerin, Mittelweg 7, plot 4, sub plots 26/2, 26/4, plot 4, sub plots 1/2, 1/4, 9/2, plot 6, 2/2, 3, 4, 5/2, 6/2, plot 7, 1/3 (partially), 1/5, 1/6, 1/8 (partially) 2 (partially).

The area is identified in the land-use plan as a general land-use area. Its former use gives reason to suspect the existence of older waste deposits.





According to the list of historical buildings, the production halls, the administration building with the thoroughfare and garages as well as the transformer station are all listed buildings. The preservation of the cubage is the priority here.

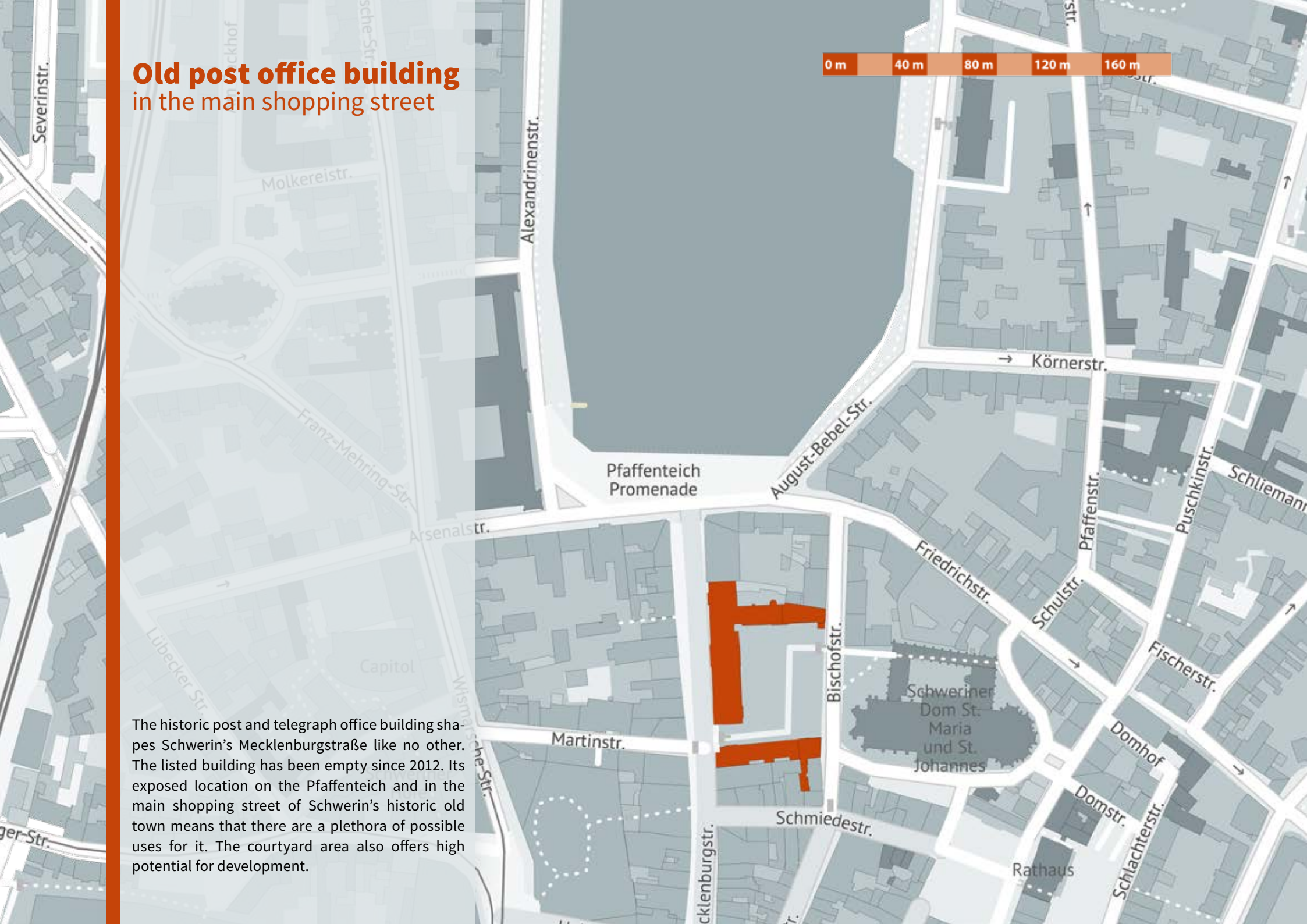
A photograph of a multi-story brick building with a white brick facade and prominent red brick window frames and decorative bands. The building features several windows of varying sizes and styles, including arched windows and windows with diamond-patterned glass. The text 'post office' is overlaid in a bold, orange font on a white background across the middle of the image.

post office

Old post office building in the main shopping street

0 m 40 m 80 m 120 m 160 m

The historic post and telegraph office building shapes Schwerin's Mecklenburgstraße like no other. The listed building has been empty since 2012. Its exposed location on the Pfaffenteich and in the main shopping street of Schwerin's historic old town means that there are a plethora of possible uses for it. The courtyard area also offers high potential for development.



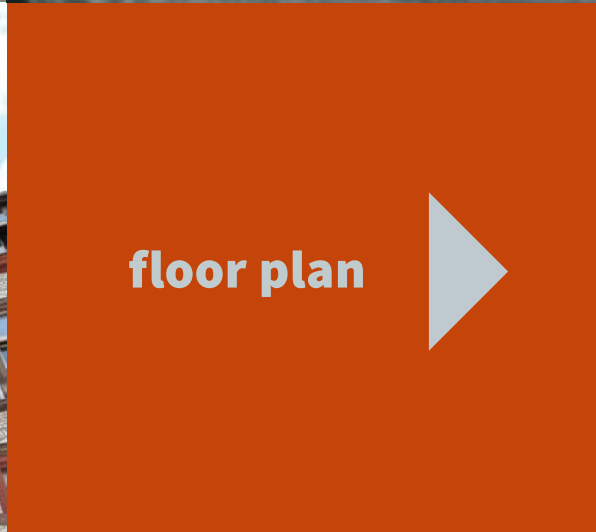


The building, three storeys high today, was built as an imperial post office according to the plans of architect Ernst Hake in the Mecklenburg neo-renaissance style. The prestigious building for the postal and telegraph system of the two Duchies of Mecklenburg-Schwerin and Mecklenburg-Strelitz was opened in April 1897. Several decorative elements adorn the façade, including several sculptures and Mecklenburg's coat of arms. The counter area with its pillars and cross-vaults is particularly impressive. The telegraph tower, with over 500 isolators used in telecommunications, literally towers above it all.



Since the Deutsche Post moved out of the building, the listed building complex has been for sale. The aim of the project is to both preserve and modernise the building, and for its re-use to be in keeping with the regulations pertaining to listed buildings. The property is located in the »Altstadt« territory covered by a preservation statute in Mecklenburgstraße 4/6/8, communal district of Schwerin, plot 37, sub plot 32/1, 32/2 and has a total surface area of around 6,300 square metres.







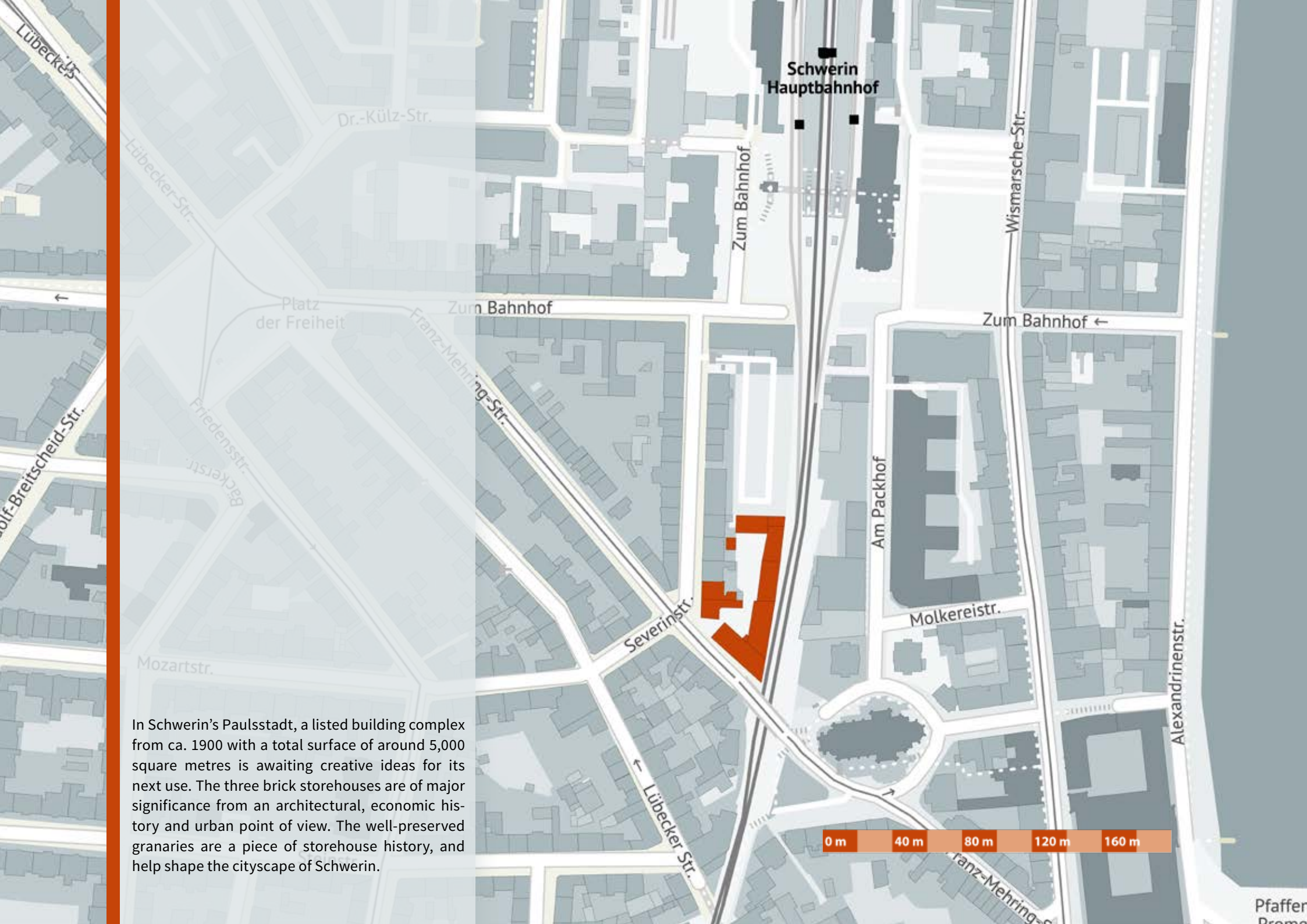
Storehouse

Storehouse ensemble


north German granary architecture
in the middle of Schwerin

Ohlerich&Sohn once earned its money with its stores full of grain. They were one of the most important grain traders in West Mecklenburg, and several of the company's granaries are still preserved today.





In Schwerin's Paulsstadt, a listed building complex from ca. 1900 with a total surface of around 5,000 square metres is awaiting creative ideas for its next use. The three brick storehouses are of major significance from an architectural, economic history and urban point of view. The well-preserved granaries are a piece of storehouse history, and help shape the cityscape of Schwerin.



A first glance at the granaries in Severin Straße and Franz-Mehring-Straße impart a closed impression: however, the three connected building parts were constructed during different building phases. The first granary in Franz-Mehring-Straße itself was built back in 1877. The entire complex of storehouses was completed by 1928 – by which time it extended as far as the railway tracks. Due to the hillside location, the rear gable has an additional storey and bears the inscription »1880«. The goods lift axles are located centrally recessed. The wall opening with the wooden hatches and the arched lintels leave their mark on the façade, supported by cornices and dripstones. The granaries are still owned by Ohlerich&Sohn, a long-established company. The granaries have been empty since the 1990s.





There are many conceivable uses – however, they should be incorporated in an overall concept in keeping with the regulations pertaining to listed buildings. Moreover, the storehouse ensemble is located in the »Paulsstadt« renovation area and in the territory covered by a preservation statute. Its location in Schwerin is close to the city, with the train station and the town hall only a stone's throw away. The property is located in the communal district of Schwerin, Severinstraße/Franz-Mehring-Straße, plot 11, sub plots 94/1.



Are you interested in our collectors' items?

Contact us – we'll be glad to help!

Landeshauptstadt Schwerin
Fachbereich Stadtentwicklung und Wirtschaft
Am Packhof 2-6
19053 Schwerin

Your contact partner

Ulrike Auge
Tel.: +49 (0) 385 545 1659
Fax: +49 (0) 385 545 1609
Mail: uauge@schwerin.de

Legal Details

Landeshauptstadt Schwerin
Die Oberbürgermeisterin
Am Packhof 2-6
19053 Schwerin
Telefon 49 (0) 0385 545-0
Telefax 49 (0) 0385 545-1009
info@schwerin.de
www.schwerin.de

Credit note

Concept and design: Felix Conradt, www.interimblau-design.de
Map, Source: Offene Regionalkarte Mecklenburg-Vorpommern (ORKa.MV)
Cover Picture: Felix Conradt
Pictures: Landeshauptstadt Schwerin
Text in German: Landeshauptstadt Schwerin
Translation: World Text Schwerin

